

# Component Drawing List Training

Component Drawing.zip



# Component Drawing List - Overview

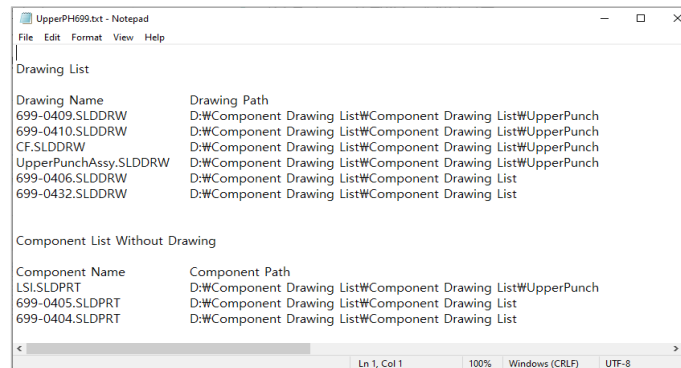
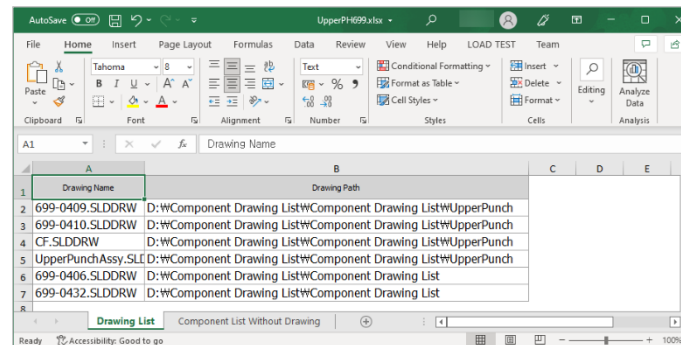
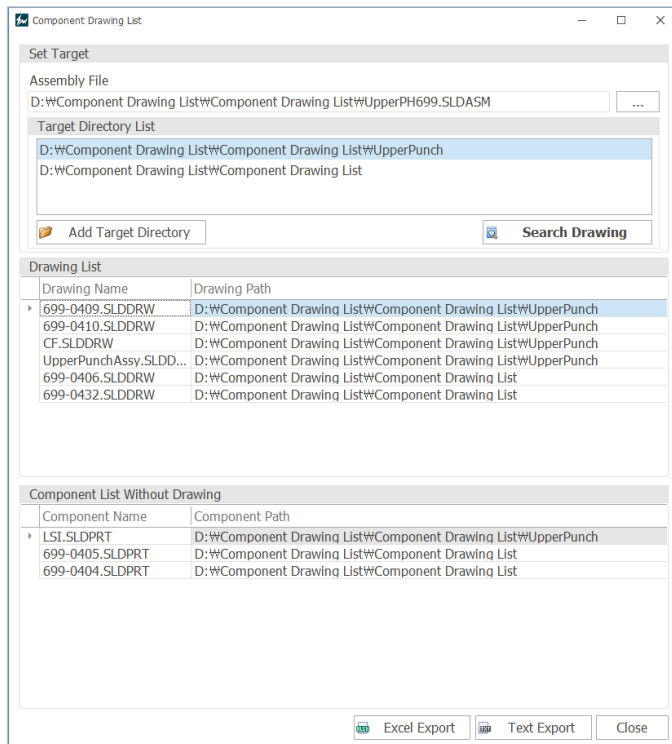
## Main Functions

- Exporting Drawing list referencing Assembly Component
- Exporting Component List without drawing

## Benefits

- Easily check the list of drawings referenced in assemblies and components
- Increase convenience by automatically detecting not made drawings among components
- Reduce search time to find reference drawings

**Course Objective: Follow the simple step-by-step instructions and learn how to use Component Drawing List.**

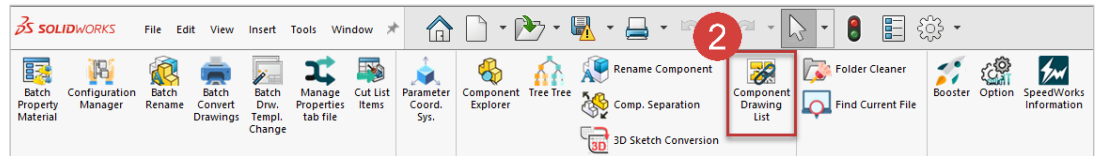


## Component Drawing List - Execution

Work on the part with the red circle (1) following instructions by yourself.  
The part with the black square (1) is an additional explanation or a reference.

- 1 Run **UpperPH699.SLDAS** File.  
(Top-Level Assembly)
- 2 Click **[SpeedWorks]tab – [Component Drawing List]** to run the tool.

Name	Date modified	Type	Size
UpperPunch	4/21/2022 1:21 PM	File folder	
699-0404.SLDPRT	4/13/2022 5:40 PM	SOLIDWORKS Part...	369 KB
699-0405.SLDPRT	4/13/2022 5:40 PM	SOLIDWORKS Part...	97 KB
699-0406.SLDDRW	4/21/2022 1:22 PM	SOLIDWORKS Dra...	134 KB
699-0406.SLDPRT	4/13/2022 5:40 PM	SOLIDWORKS Part...	361 KB
699-0432.SLDDRW	4/21/2022 1:22 PM	SOLIDWORKS Dra...	94 KB
699-0432.SLDPRT	4/13/2022 5:40 PM	SOLIDWORKS Part...	119 KB
1 UpperPH699.SLDASM	4/13/2022 5:42 PM	SOLIDWORKS Ass...	473 KB
UpperPH699.SLDDRW	4/15/2022 11:10 AM	SOLIDWORKS Dra...	433 KB



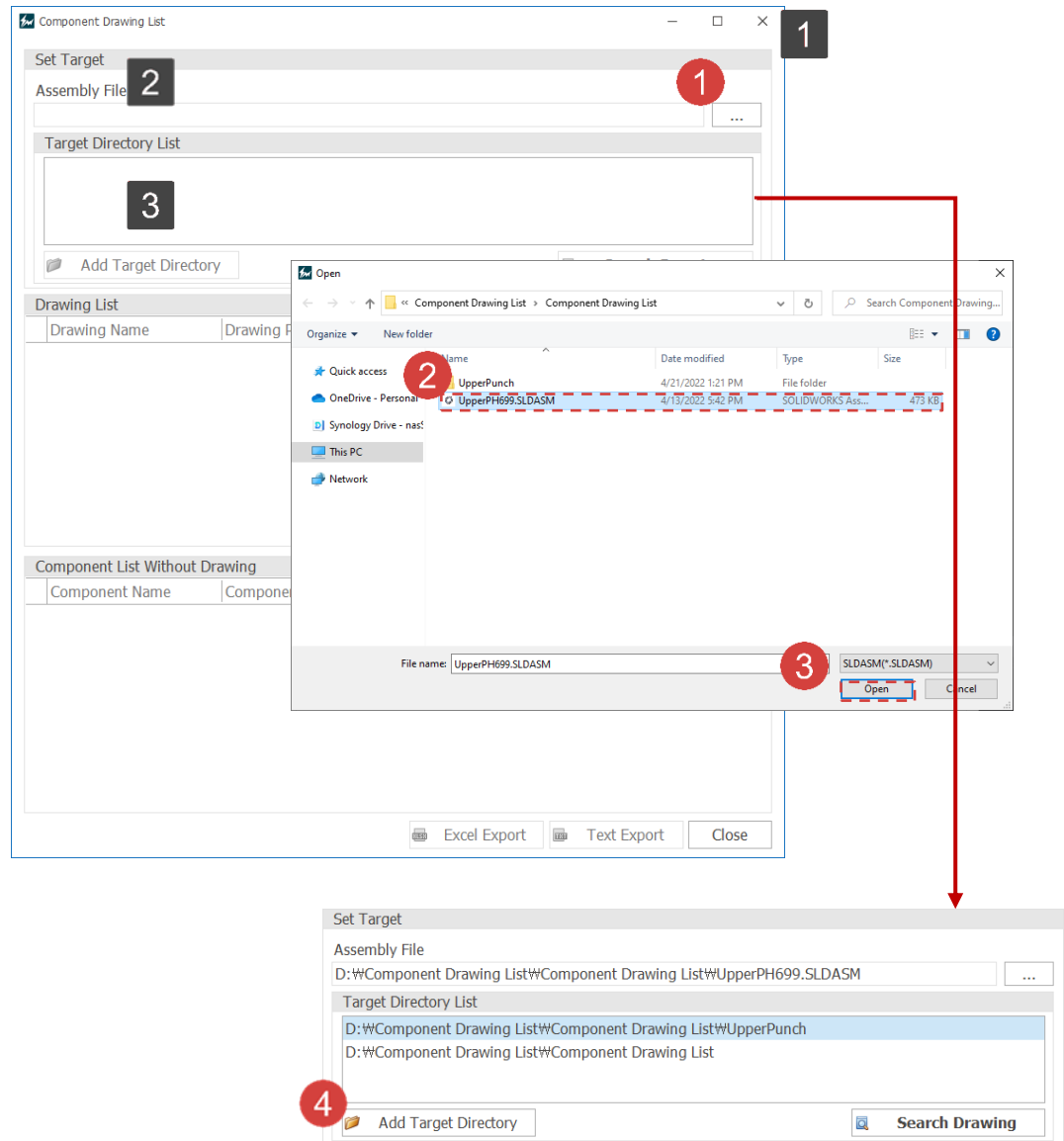
※ You can download example files at Support page in SpeedWorks Homepage(<https://speedworks.info>).

## Component Drawing List - Setting

Work on the part with the red circle (1) following instructions by yourself.  
The part with the black square (2) is an additional explanation or a reference.

- 1 The currently open assembly file is displayed.  
Click to [...] button to open another assembly file.
- 2 Select **UpperPH699.SLDASM** file among training file.
- 3 Click **[Open]** button to use target assembly.
- 4 Click **[Add Target Directory]** button to add searching folder into Target directory list.

- 1 This is a Component Drawing List window.
- 2 Users can specify the path to the currently active assembly file or the assembly path through which to search the drawing.
- 3 The component path including in the target assembly file is displayed, and a drawing target directory can be added.



# Component Drawing List - Result

Work on the part with the red circle (1) following instructions by yourself.  
The part with the black square (1) is an additional explanation or a reference.

- 1 After all set, click **[Search Drawing]** button to search directory.
- 2 Click **[Excel Export]** to export result as excel file.
- 3 Click **[Text Export]** to export result as text file.

- 1 Displays the contents of the drawing list output as a result of drawing search.
- 2 Display component list without drawing.
- 3 This is a result screen of [Excel Export].
- 4 This is a result screen of [Text Export].

